



Nevada Secretary of State

Constituent Information Translations

Language Access / Voter Education



American Sign Language (ASL)

<https://www.nvsos.gov/sos/elections/language-access/information-in-american-sign-language/-fsiteid-1>



español | Spanish

<https://www.nvsos.gov/sos/elections/information/2024-election-information/language-access/informasyon-sa-tagalog/-fsiteid-1>



Filipino Tagalog

<https://www.nvsos.gov/sos/elections/information/2024-election-information/language-access/informasyon-sa-tagalog/-fsiteid-1>



ภาษาไทย Thai

<https://www.nvsos.gov/sos/elections/election-information/2024-election-information/language-access/thai/-fsiteid-1>



Tiếng Việt | Vietnamese

<https://www.nvsos.gov/sos/elections/election-information/2024-election-information/language-access/vietnamese/-fsiteid-1>



한국어 | Korean

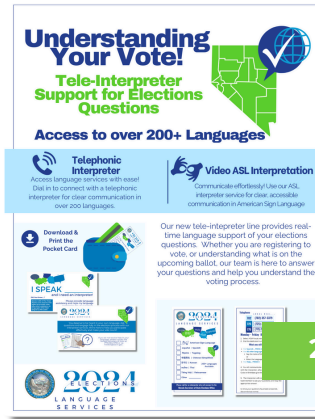
<https://www.nvsos.gov/sos/elections/election-information/2024-election-information/language-access/korean>



中国简化 | Chinese

<https://www.nvsos.gov/sos/elections/election-information/2024-election-information/language-access/chinese>

General Circulation (Public) <https://www.nvsos.gov/sos/elections/langaccess>



2 Pager

[Spanish](#)

[Vietnamese](#)

[Tagalog](#)

[Korean](#)

[Thai](#)

[Chinese](#)



NEVADA SECRETARY OF STATE

Quick Tips for Inclusive Elections Engagement

01 Identify the issues that are important to you and your family.
What issues closely impact your family, your community or your future?
Determine why they are important to you.

02 Get information on the roles and responsibilities of the officers that are being considered in the election.
Understand what candidate offices make decisions regarding the issues of importance to you.

03 Which of the candidates most closely aligns with your values and the interests you hold?
Identify the candidates, where to learn more about them, determine if their interests are in alignment with yours.

04 PLAN and EXPECT to participate in your voting opportunity.
Register or update any current registration you may have and determine possible polling locations.

05 Take a moment to complete your ballot. Determine how you will submit it and MAKE IT HAPPEN.
Vote early in person or on election day (7 a.m. - 7 p.m.). Return your mail ballot via mail, drop it at an official drop box, or use the EASE system at NOEASE.gov (only authorized for certain voters).

Register / Update Registration
Verify your name, address, and party (if applicable) to ensure your ballot and other information gets to you.

Track Your Ballot
Stay in the loop with your ballot by tracking in ballot tracking!

Access Interpretive Services
Use the interpreter services to ask your questions in languages other than English.

Other Information in English
Before election day, verify your signature to ensure your vote is counted correctly.

VOTER REGISTRATION

- Register to Vote
- Check Your Voter Registration
- Update Your Registration
- Unaffiliated & Overseas Citizens
- Same Day Registration

MISCELLANEOUS INFORMATION

- Voters Bill of Rights
- County Clerk Contact Information
- Restoration of Voter Rights in Nevada
- Request to Withdraw Address & Telephone Number from the Public
- Search Campaign Finance Reports & Personal Finance Disclosures
- Frequently Asked Questions

HOW & WHERE TO VOTE

- Each Vote is Precious
- Mail Ballot Preference
- Where's My Polling Location?
- NV EASE app
- Check the Status of Your Ballot



Other Languages

ELECTIONS: nvsos@nv.gov

<https://www.nvsos.gov/elections/langaccess>

[Spanish](#)

[Vietnamese](#)

[Tagalog](#)

[Korean](#)

[Thai](#)

[Chinese](#)