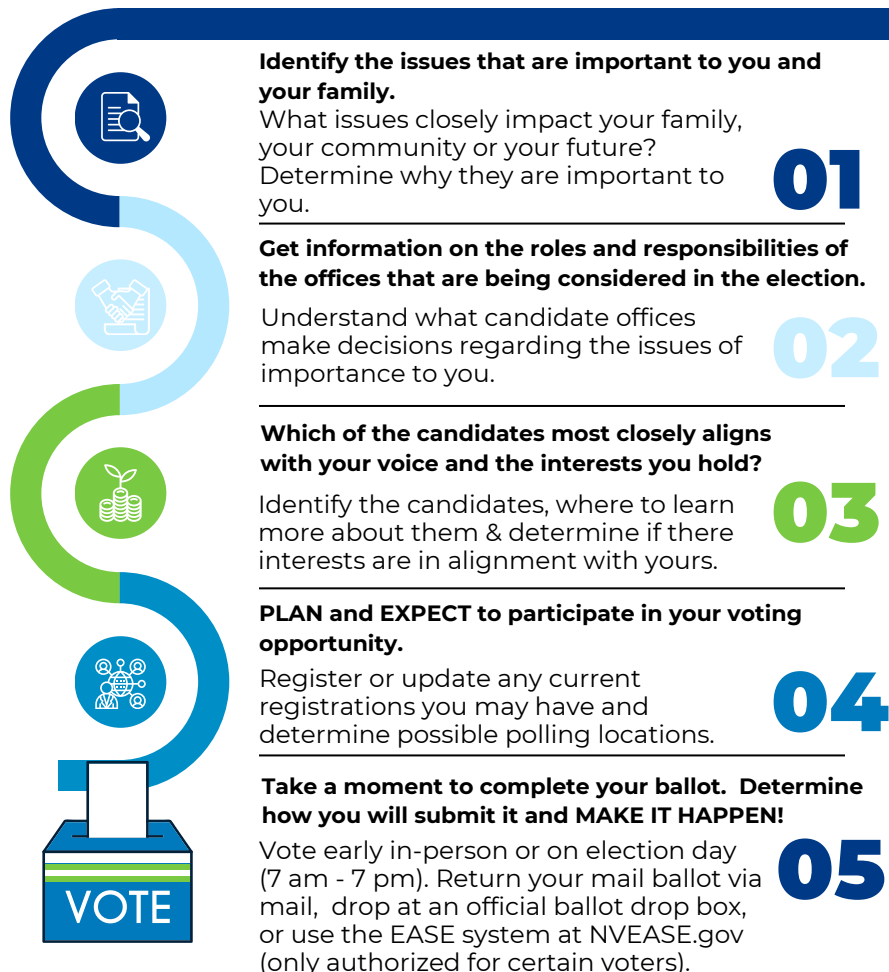




Quick Tips for Inclusive Elections Engagement



Register | Update Registration



Verify your name, address and party (if applicable), to ensure your ballot and other information gets to you.

Track Your Ballot

Stay in the loop with your ballot by enrolling in ballot tracking!



Access Interpretive Services



Use the interpreter services to ask your questions in languages other than English.

Other Information in English

Before election day, verify your signature to ensure your vote is counted correctly.



VOTER REGISTRATION

- [Register to Vote](#)
- [Check Your Voter Registration](#)
- [Update Your Registration](#)
- [Uniformed & Overseas Citizens](#)
- [Same Day Registration](#)

HOW & WHERE TO VOTE

- [Early Vote in Person](#)
- [Mail Ballot Preference](#)
- [Where's My Polling Location?](#)
- [NV EASE.gov](#)
- [Check the Status of Your Ballot](#)

MISCELLANEOUS INFORMATION

- [Voters Bill of Rights](#)
- [County Clerk Contact Information](#)
- [Restoration of Voter Rights in Nevada](#)
- [Request to withhold Address & Telephone Number from the Public](#)
- [Search Campaign Finance Reports & Personal Finance Disclosures](#)
- [Frequently Asked Questions](#)

Other Languages

