

LANDER COUNTY ELECTION PRECINCT BOUNDARIES

State of Nevada)
 :SS
County of Lander)

Pursuant to Nevada Revised Statute 293.205, the following election precincts are hereby established for Lander County, Nevada:

Argenta Precinct No. 1:

Commencing at the intersection of Interstate Highway 80 and State Route 305, bounded on the West by State Route 305 from the overpass on Interstate 80, North to Front Street/US 40, thence East to the Battle Mountain Flood Dike, thence from that junction South to Interstate I-80, West to the point of beginning.

Argenta Precinct No. 2:

Commencing at the junction of Interstate Highway 80 and State Route 305, thence Northeasterly along State Route 305 (Broad Street) to Front Street, thence Southeasterly along Front Street to Reese Street, thence Northeasterly along Reese Street to North First Street, thence Northwesterly along North First Street to Humboldt Street, thence Northeasterly along Humboldt Street to North Second Street, thence Northwesterly along North Second Street to Mountain Street, thence Northeasterly along Mountain Street to Trescott Street, thence Southeasterly along Trescott Street to Reese Street, thence Northeasterly along Reese Street to Old River Road, thence continuing along Old River Road/Highway 35 to the junction with the Western Pacific Railroad, thence continuing Southeasterly and Easterly along the Western Pacific Railroad to the Eureka County line, thence North along the Eureka County line to the Elko County line, thence West along the Elko County line to the Humboldt County line, thence South along the Humboldt County line to Interstate Highway 80, thence Southeasterly along Interstate Highway 80 to the point of beginning.

Argenta Precinct No 3:

Commencing at the junction of Front Street and Reese Street, thence Northeasterly along Reese Street to North first Street, thence Northwesterly along North First Street to Humboldt Street, thence Northeasterly along Humboldt Street to North Second Street, thence Northwesterly along North Second Street to Mountain Street, thence Northeasterly along Mountain Street to Trescott Street, thence Southeasterly along Trescott Street to Reese Street, thence Northeasterly along Reese Street to Old River Road, thence continuing along Old River Road/Highway 35 to the junction with the Western Pacific Railroad, thence continuing Southeasterly and Easterly along the Western Pacific Railroad to the Eureka County line, thence South along the Eureka County line to Interstate Highway 80, thence West along Interstate Highway 80 to the Battle Mountain Flood Dike, thence Northerly along the Battle Mountain Flood Dike to U.S. Highway 40, thence Northwesterly along U.S. Highway 40/Front Street to the point of beginning.

Argenta Precinct No. 4:

Commencing at the junction of Interstate 80 and State Route 305, South on State Route 305 to the 40th Parallel, thence East on the 40th Parallel to the Lander County border, thence North to Interstate 80, thence West to junction of Interstate 80 and State Route 305.

Argenta Precinct No. 5:

Commencing at the junction of Interstate 80 and State Route 305, South on State Route 305 to the 40th Parallel, thence West on the 40th Parallel to the Lander County border, thence North along the Lander County border to Interstate 80, thence East to the junction of Interstate 80 and State Route 305.

Southern Lander County Precinct No. 6

All of that portion of Lander County South of the 40th Parallel not included in Precincts 7, 8 and 9.

Austin Precinct No. 7:

That portion of Lander County encompassing the Lander County Water and Sewer District No. 2 service area.

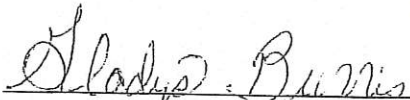
Gillman Springs Ranch Precinct No. 8:

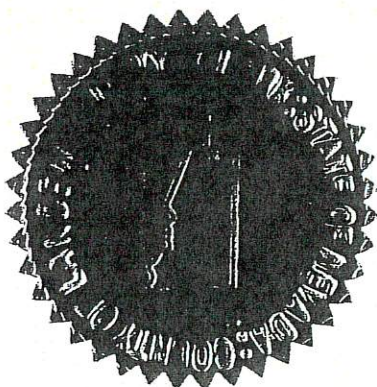
That portion of Lander County encompassing the Gillman Springs Ranch subdivision.

Kingston Precinct No. 9:

That portion of Lander County encompassing the unincorporated Town of Kingston Village.

Dated this 28th Day of April, 2004


Gladys Burfis
Lander County Clerk



LANDER COUNTY COMMISSIONER DISTRICT BOUNDARIES

State of Nevada)
 :ss
County of Lander)

COMMISSIONER DISTRICT NO 1:

Argenta Precinct No. 1 and Argenta Precinct No. 3 (see attached legal description) combined together comprises Lander County Commissioner District No. 1.

COMMISSIONER DISTRICT NO 2:

Argenta Precinct No. 2 (see attached legal description) comprises Lander County Commissioner District No. 2.

COMMISSIONER DISTRICT NO. 3:

Southern Lander County Precinct No. 6, Austin Town Precinct No. 7, Gillman Springs Ranch Precinct No. 8, and Kingston Precinct No. 9 (see attached legal description) combined together comprises Lander County Commissioner District No. 3.

COMMISSIONER DISTRICT NO. 4:

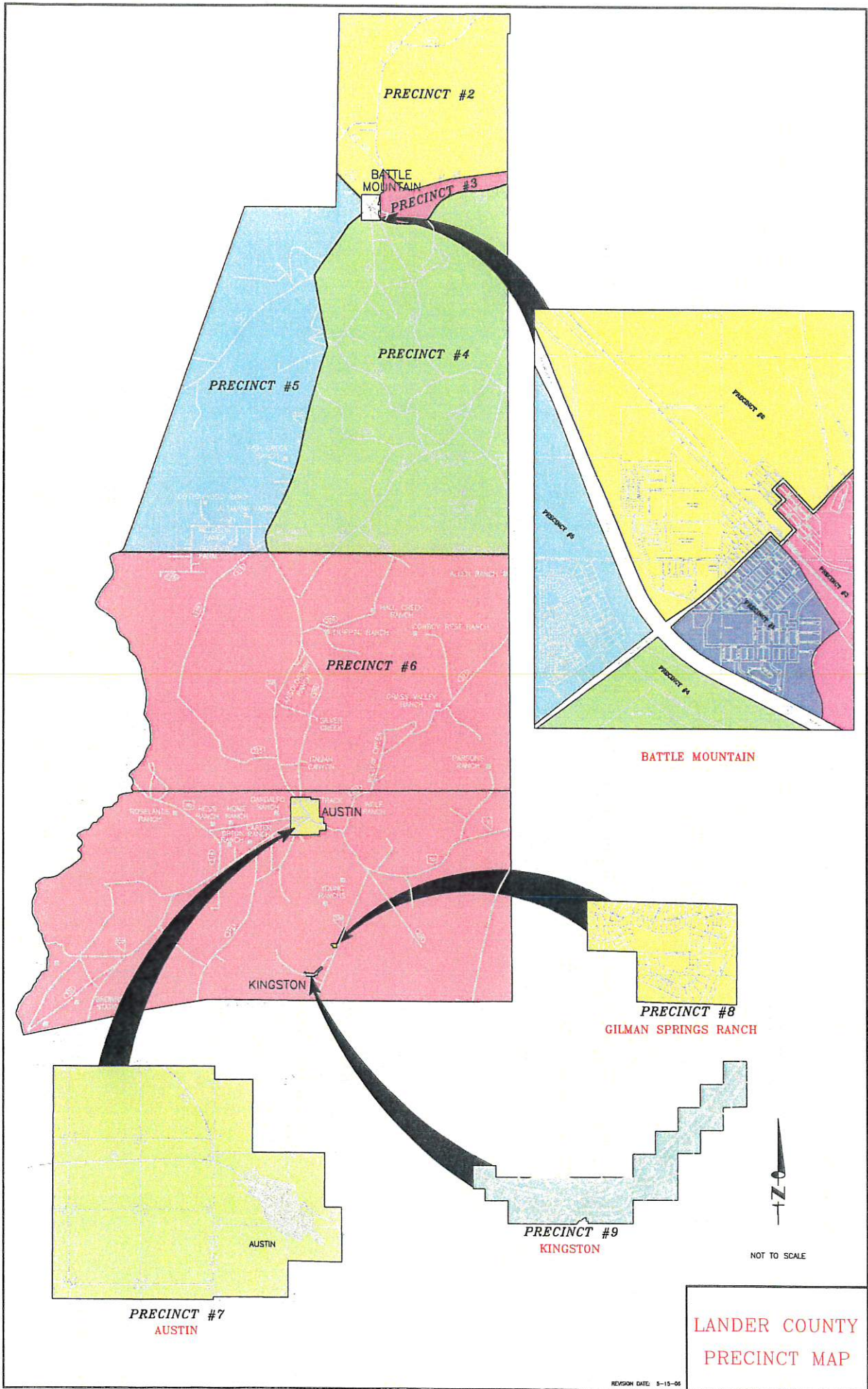
Argenta Precinct No. 4 (see attached legal description) comprises Lander County Commissioner District No. 4.

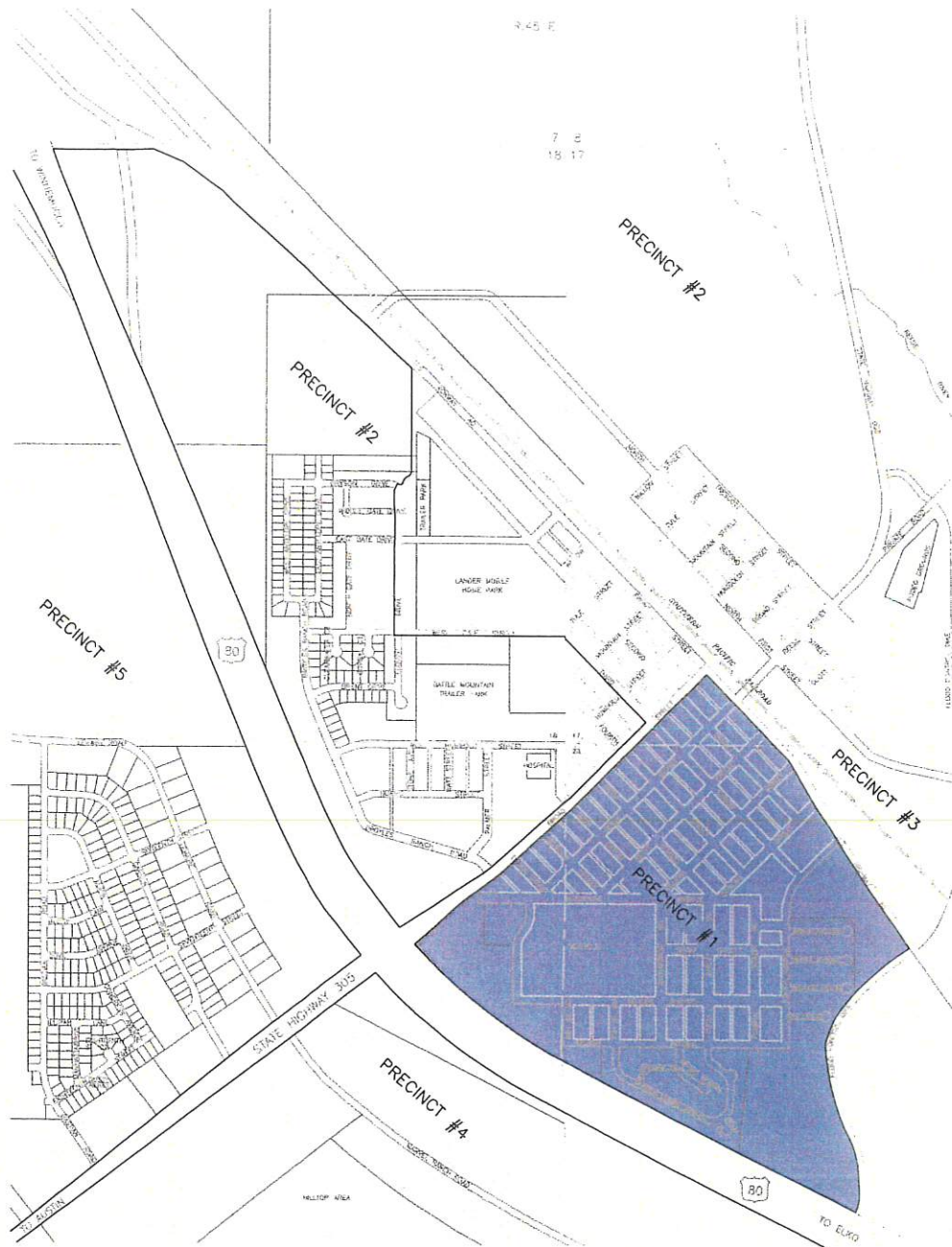
COMMISSIONER DISTRICT NO. 5:

Argenta Precinct No. 5 (see attached legal description) comprises Lander County Commissioner District No. 5.

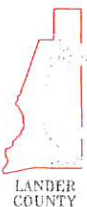
Dated this 27th Day of March, 2008

Gladys Burris
Lander County Clerk



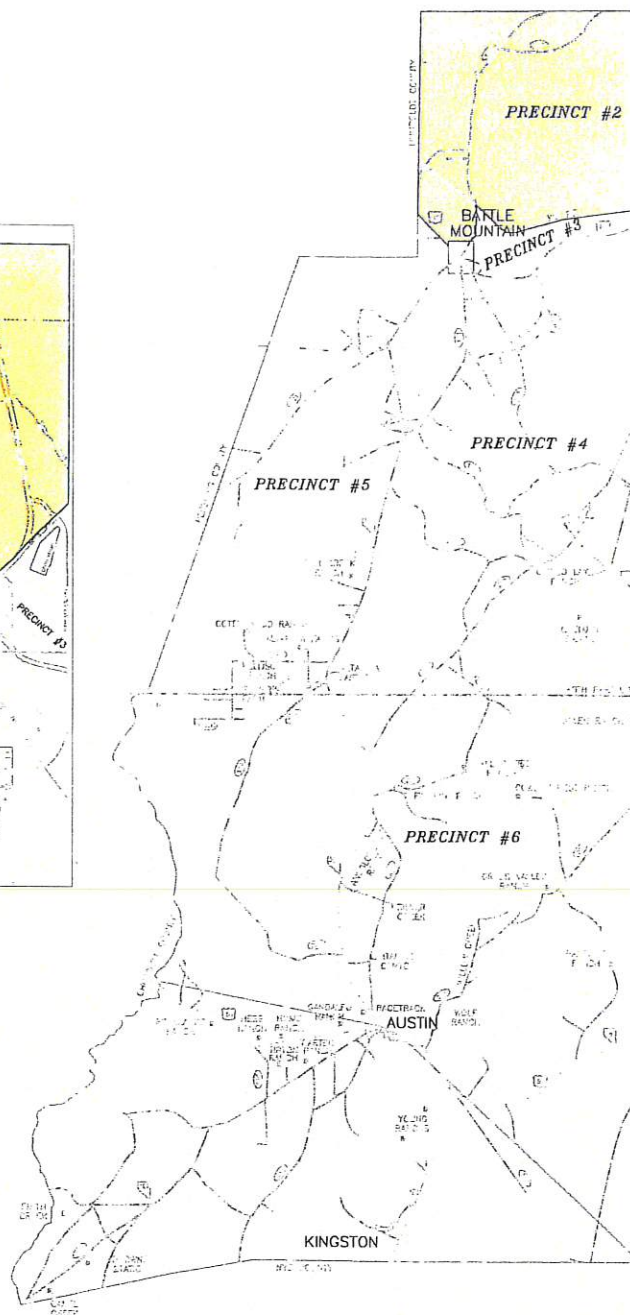


BATTLE MOUNTAIN PRECINCT #1



NOT TO SCALE

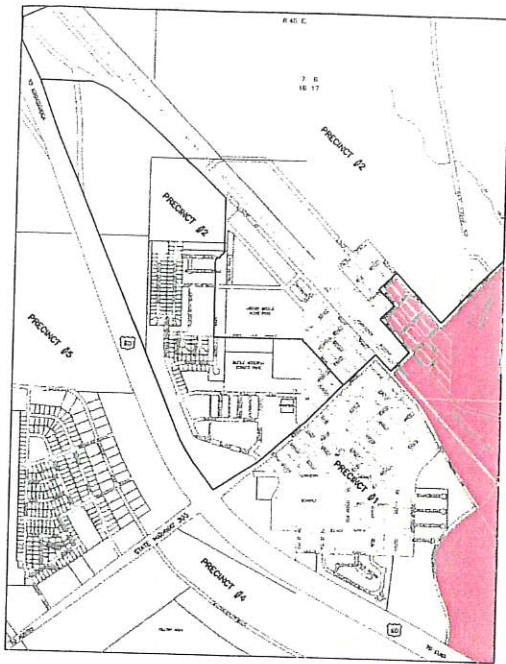
LANDER COUNTY
PRECINCT MAP



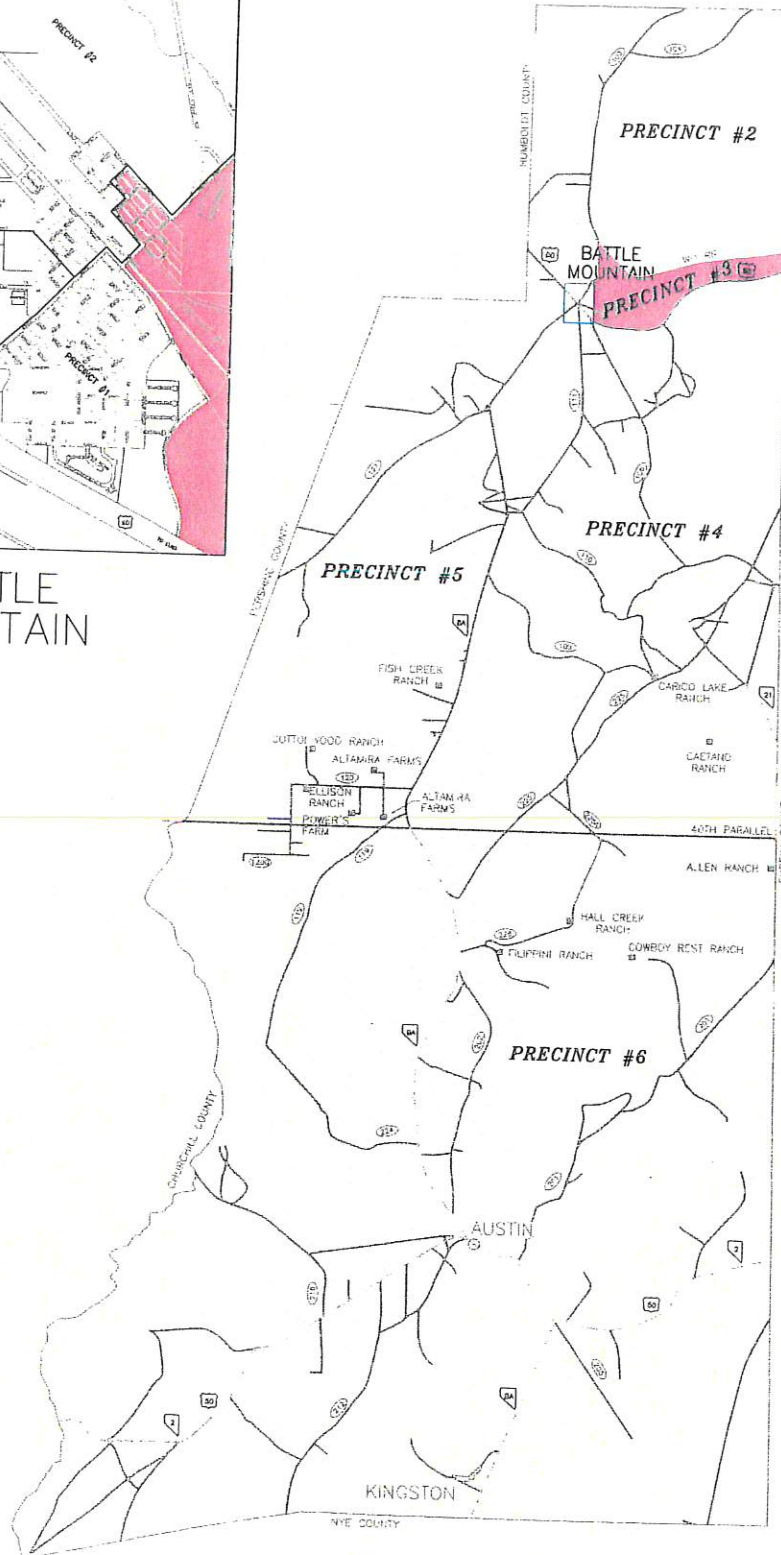
2-2-

100 10 SCALE

LANDER COUNTY
PRECINCT MAP

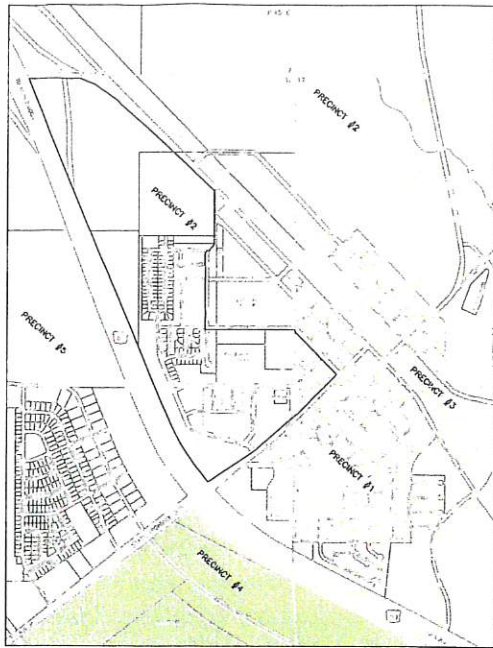


BATTLE MOUNTAIN

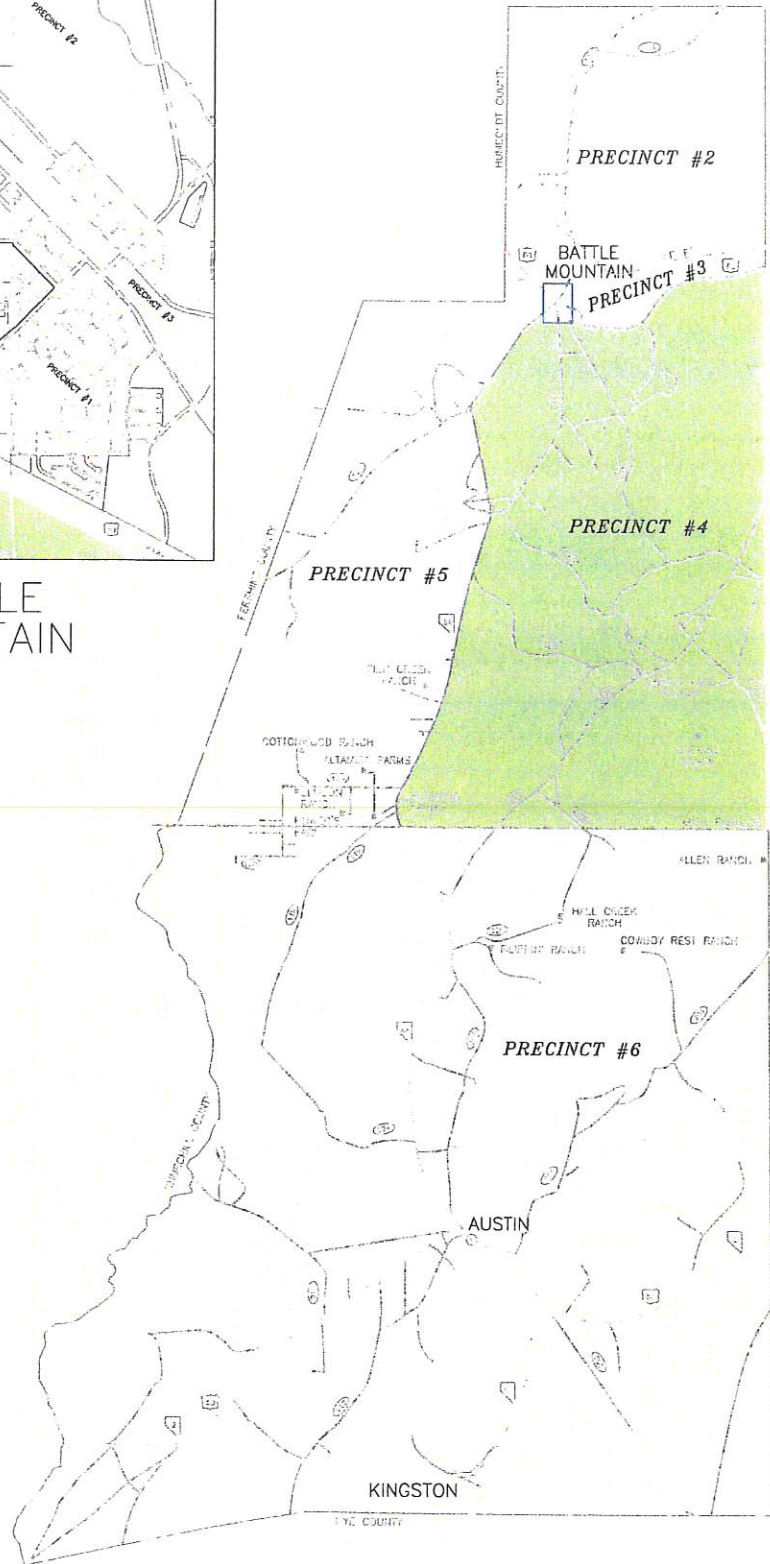


PRECINCT #3

LANDER COUNTY
PRECINCT MAP

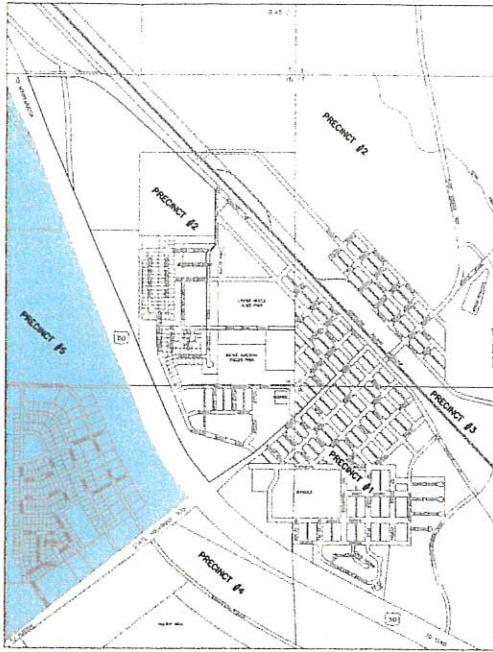


BATTLE
MOUNTAIN

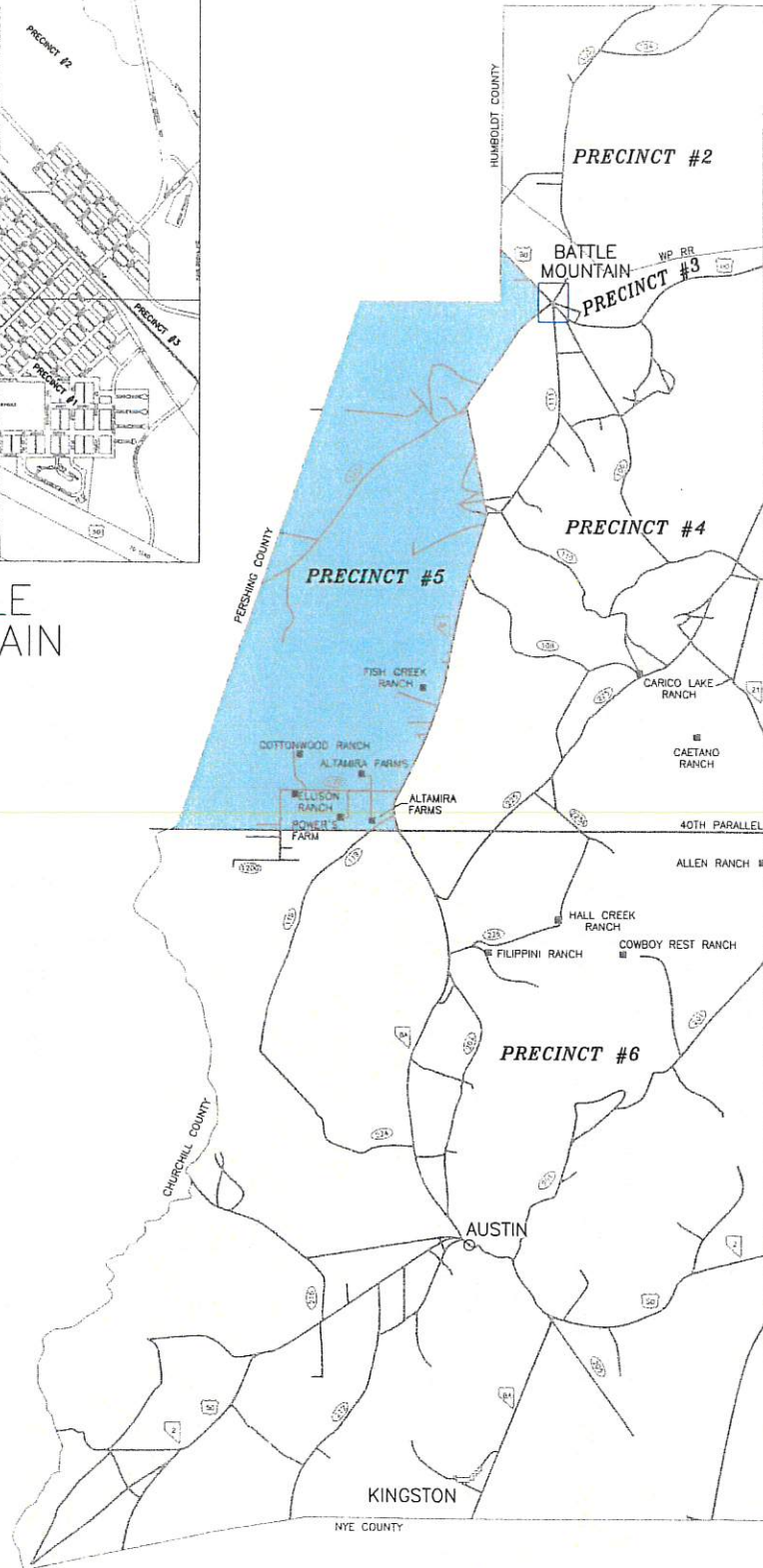


PRECINCT #4

LANDER COUNTY
PRECINCT MAP



BATTLE
MOUNTAIN



NOT TO SCALE

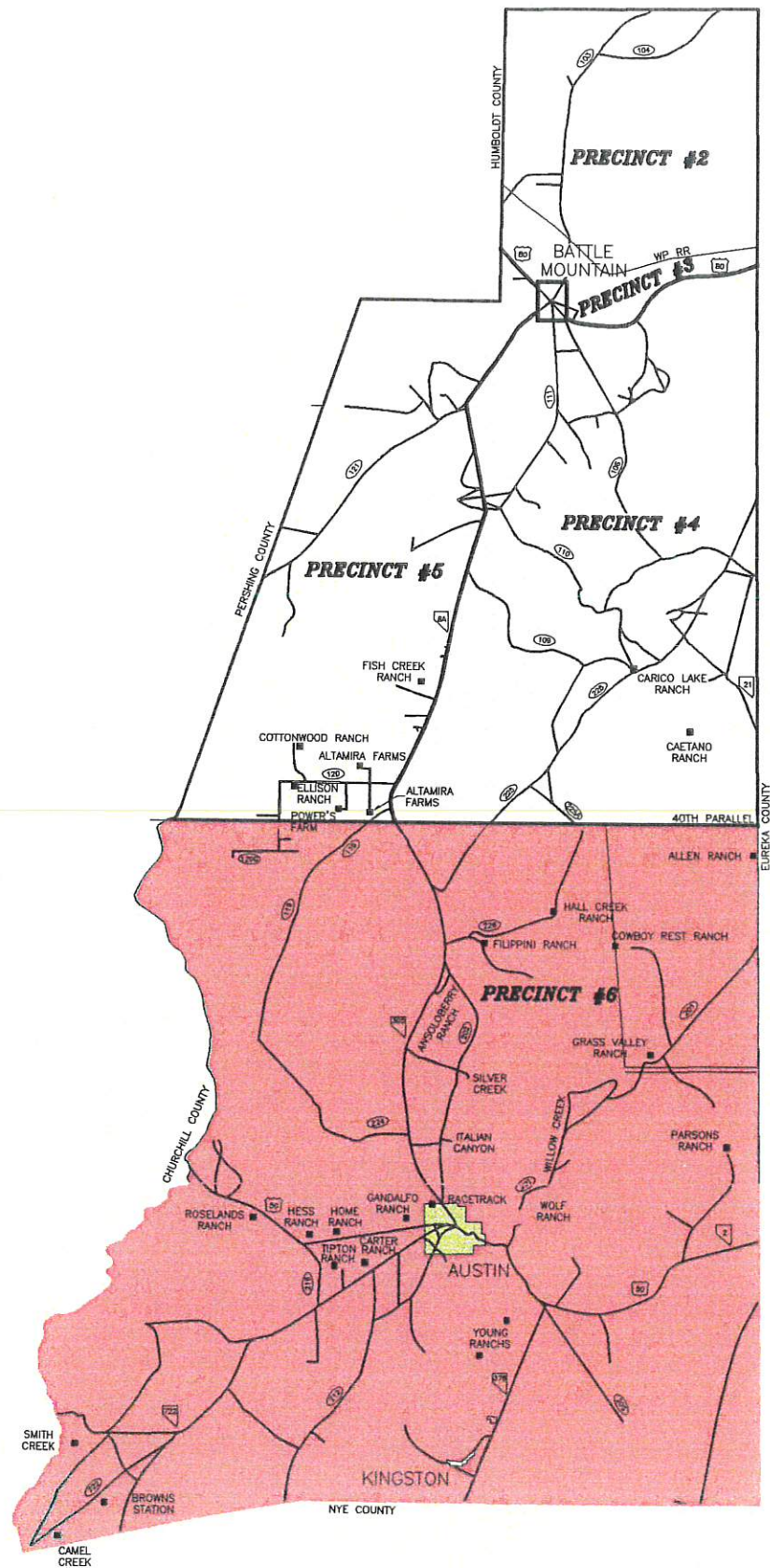


PRECINCT #5

LANDER COUNTY
PRECINCT MAP

REVISION DATE: 2-1-02

P:\Reno\2001105-2001-026 Lander County Precinct Maps\IP-6.DWG, 02/01/2002 04:25:22 PM

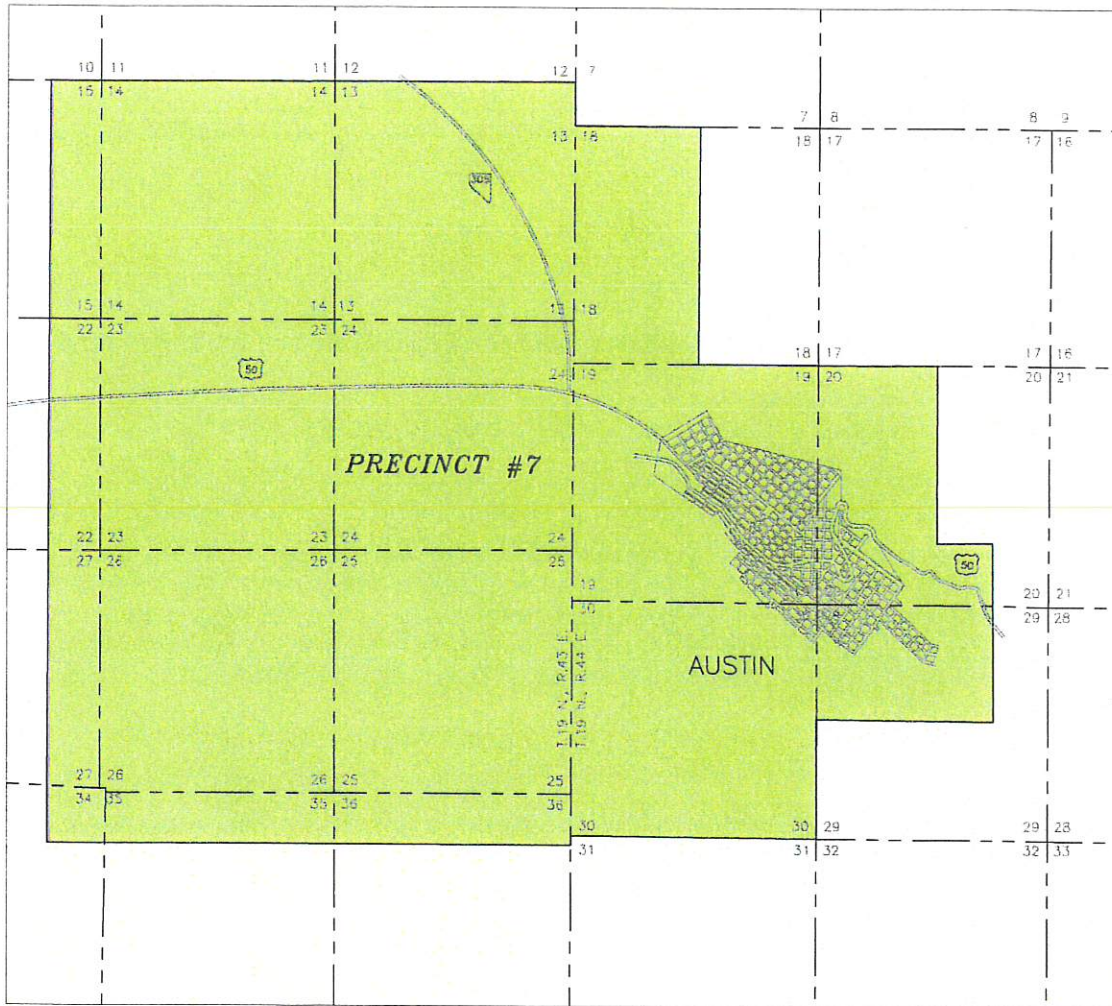


PRECINCT #6



LANDER COUNTY
PRECINCT MAP

REVISION DATE: 2-1-02

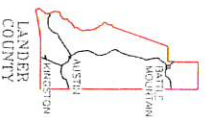
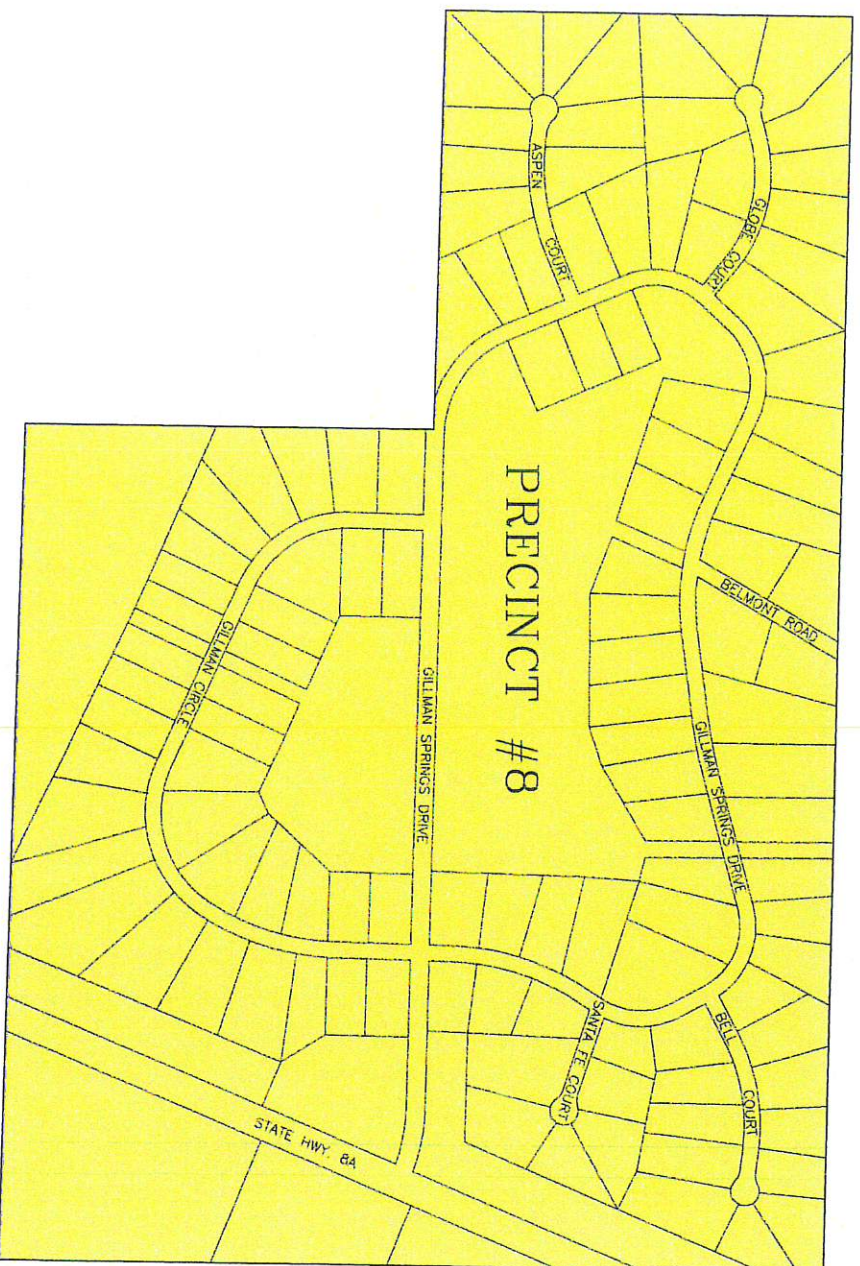


PRECINCT #7



LANDER COUNTY
PRECINCT MAP

GILMAN SPRINGS RANCH PRECINCT #8

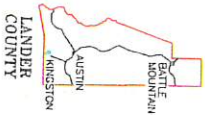
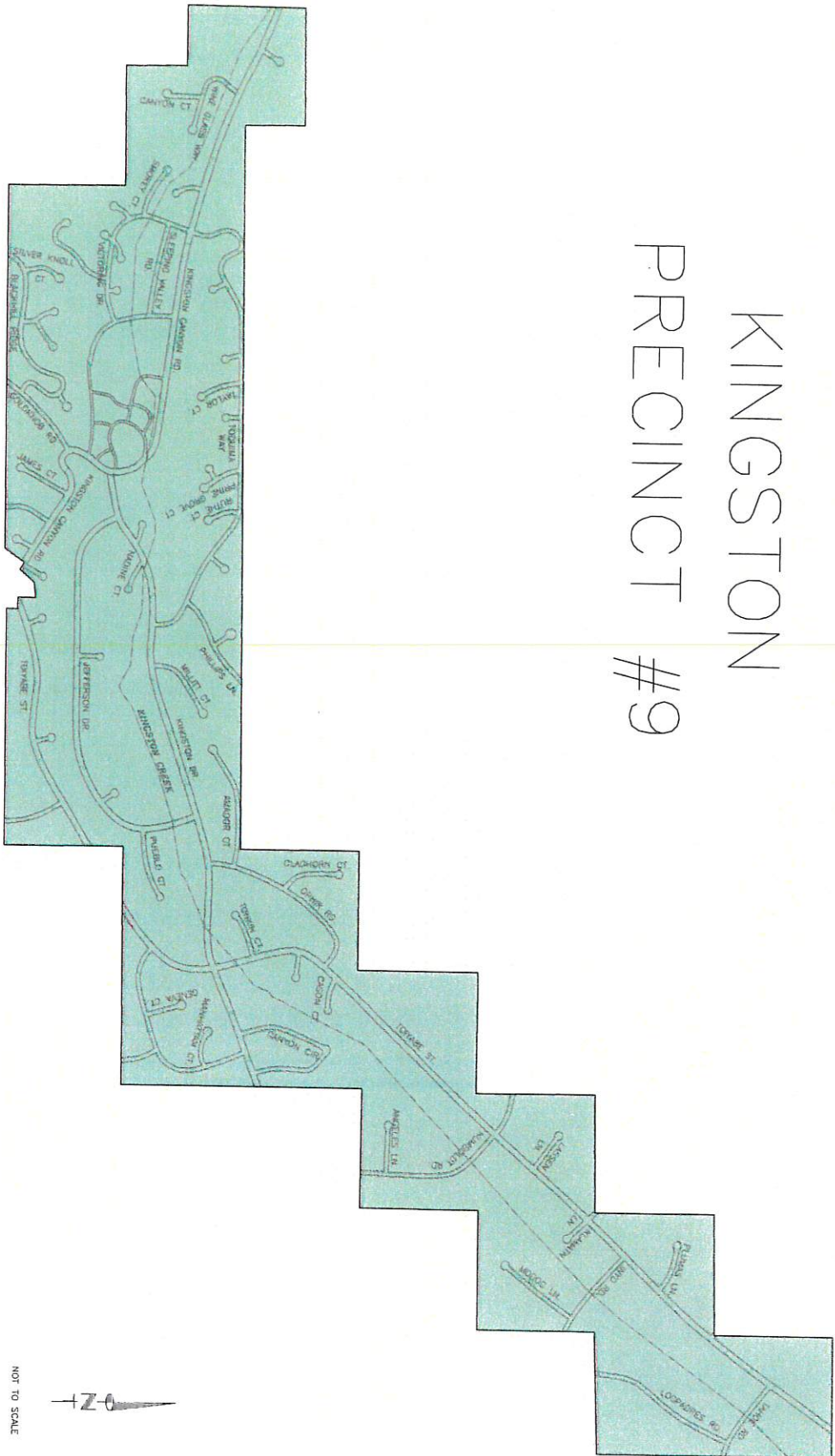


NOT TO SCALE

LANDER COUNTY
PRECINCT MAP

REVISION DATE: 2-1-02

PRECINCT #9

LANDER COUNTY
PRECINCT MAP

REVISION DATE: 2-1-02

NOT TO SCALE

